

CN SERIES DIN CENTRIFUGAL PUMP

The CN series single impeller pumps suit a wide range of applications, most commonly found in Dairy sheds, machinery wash down bays and industrial circulation. The CN series have proven to be strong and reliable in many applications.

Features

- Manufactured to DIN 24255 standards
- Cast Iron construction
- Maximum temperature of liquid: +90°C
- Maximum ambient temperature: +40°C
- Maximum working pressure: 10Bar
- Rated continuous duty
- IP55 protection
- Supplied with counter flange set
- 50Hz / 2900 rpm

Optional features

- 60Hz / 3400RPM
- Ingress protection upgrade to IP56
- Hard face or knife edge seals
- High Temperature upgrade to 110°C



CN SERIES

CONSTRUCTION DETAILS

Item	Material
Pump Body	G20 Cast Iron
Motor support bracket	G20 Cast Iron
Impeller	G20 Cast Iron
Counter flanges	Galvanized steel with EPDM gaskets
Pump Shaft	Aisi 304 Stainless steel
Mechanical seal	Carbon/ceramic

Motor Details

Type	Asynchronous, squirrel cage type, totally enclosed with external ventilation
Insulation	Class F
Protection	IP55
Overload protection	No overload included – to be supplied by user
Maximum operating temperature	+40°C Ambient
Rotation	Counter clock wise – pump end view
Duty	Continuous
Nominal Speed	2 Pole - 2900RPM

The CN series can also be supplied with stub shaft or bare shaft drive configuration. The stub shaft close couple option allows the use of a standard B3/B5 metric motor to be coupled directly to the pump in 2 pole or 4 pole speed. The Bare shaft option allow the CN series pump to be Petrol or diesel engine driven or long coupled with and electric motor, the added advantage here being the electric motor can be serviced without the pump being removed from the installation.



BSN – Bare Shaft



ING – Stub Shaft



CN32,40 & 50 SERIES PERFORMANCE CHART

Model	HP	KW	M3/H	0	3	6	9	12	15	18	21	24	27	30	33	36	39	42	45	48	57	60	66	72	78		
				LPM																							
				0	50	100	150	200	250	300	350	400	450	500	550	600	650	700	750	800	950	1000	1100	1200	1300		
CN32-300	3.0	2.2	HEAD (M)	30.5	30.5	30	29.5	28.5	27.5	25.5	23	20.5	17														
CN32-400	4.0	3.0		37	37.5	37.5	37	36.5	34.5	33	31	28	25	22													
CN32-550	5.5	4.0		44	44.5	44	43	42	41	39	37.5	35	32.5	30													
CN32-750	7.5	5.5		51	51.5	51	50.5	50	48	46.5	45	42.5	40	38													
CN32-1000	10	7.5		59.5	59.5	59.5	59	58	57.5	56	54.5	52.5	50	47.5													
CN40-400	4.0	3.0		31	31	31	31	30	29	28.5	27.5	27	25	23.5	22	19.5	17	14.5									
CN40-550	5.5	4.0		38.5	39	38.5	38.5	38	37.5	36.5	35.5	34.5	33	32	29.5	27.5	25	23									
CN40-750	7.5	5.5		44	44.5	44.5	45	44.5	44	43.5	43	42	40.5	39	37	34.5	32	29	25								
CN40-1000	10	7.5		54.5	55	55	55	55	55	55	54.5	54	53	51.5	49.5	48	45.5	43	40	36.5							
CN40-1500	15	11		72	72	72	72.5	72	71	70.5	70	69	68	66.5	65	63.5	61.5	59	56	54.5							
CN40-2000	20	15		84.5	85	85.5	85.5	85.5	85	85	84.5	84	82.5	81	79.5	78	75.5	73.5	70.5								
CN50-300	3.0	2.2		17.5	18	18	18	18	18	18	18	17.8	17.5	17	16.5	16	15.5	15	14	13.5	12.5	10					
CN50-400	4.0	3.0		22.5	22.5	22.5	22.5	22.5	22.5	22	21.5	21.5	21	20.5	20	19.5	19	18.5	17.5	17	14.5						
CN50-550	5.5	4.0		25.5	25.5	26	26	26	25.5	25.5	25.5	25	25	24.5	24.5	24	23.5	23	22.5	22	19.5						
CN50-750	7.5	5.5		31.5	32	32	32	32	32	31.5	31.5	31	30.5	30	29.5	29.5	28.5	28	27	26.5	23.5	22	19.5				
CN50-1000	10	7.5		39.5	40	40	40	40	40	40	40	39.5	39.5	39	38.5	38	37.5	37.5	37	36.5	34	33	31	28			
CN50-1500	15	11		52.5	53.5	54	54.5	54.5	54.5	54.5	54	53.5	53.5	52	51	50	49	47.5	46.5	42	39.5	35.5	30				

CN65 PERFORMANCE CHART

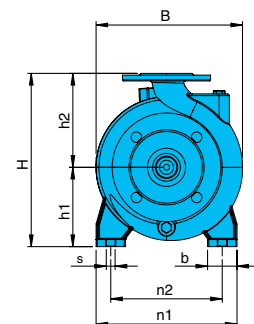
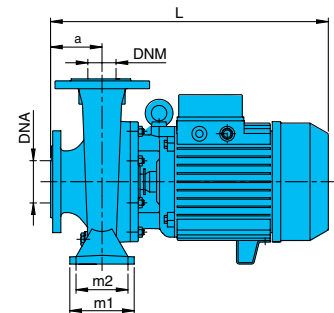
Model	HP	KW	M3/H	0	12	24	30	36	42	48	54	60	66	72	78	84	96	102	120	132
				LPM																
				0	200	400	500	600	700	800	900	1000	1100	1200	1300	1400	1600	1700	2000	2200
CN65-750	7.5	5.5	H (M)	23.5	24.5	25	25	25	24.5	24	23.5	23	22.5	21.5	20.5	19	16	14		
CN65-1000	10	7.5		26	26.5	27	27	26.5	26.5	26.5	26	26	24.5	23.5	23	21.5	18.5	17		
CN65-1500	15	11		36.5	38	38.5	39	39	39	38.5	38.5	38	38	37	36.5	35.5	33.5	32.5	28	

CN32 SERIES

CN32 SERIES							
Model	Hp	KW	Phase	Voltage	Full load amps		
					230V	400V	690V
CN32-300	3.0	2.2	3	230/400	8.1	4.7	-
CN32-400	4.0	3.0	3	230/400	10.0	5.8	-
CN32-550	5.5	4.0	3	230/400	16.0	7.6	-
CN32-750	7.5	5.5	3	400/690		10.7	6.2
CN32-1000	10.0	7.5	3	400/690		13.9	8.0

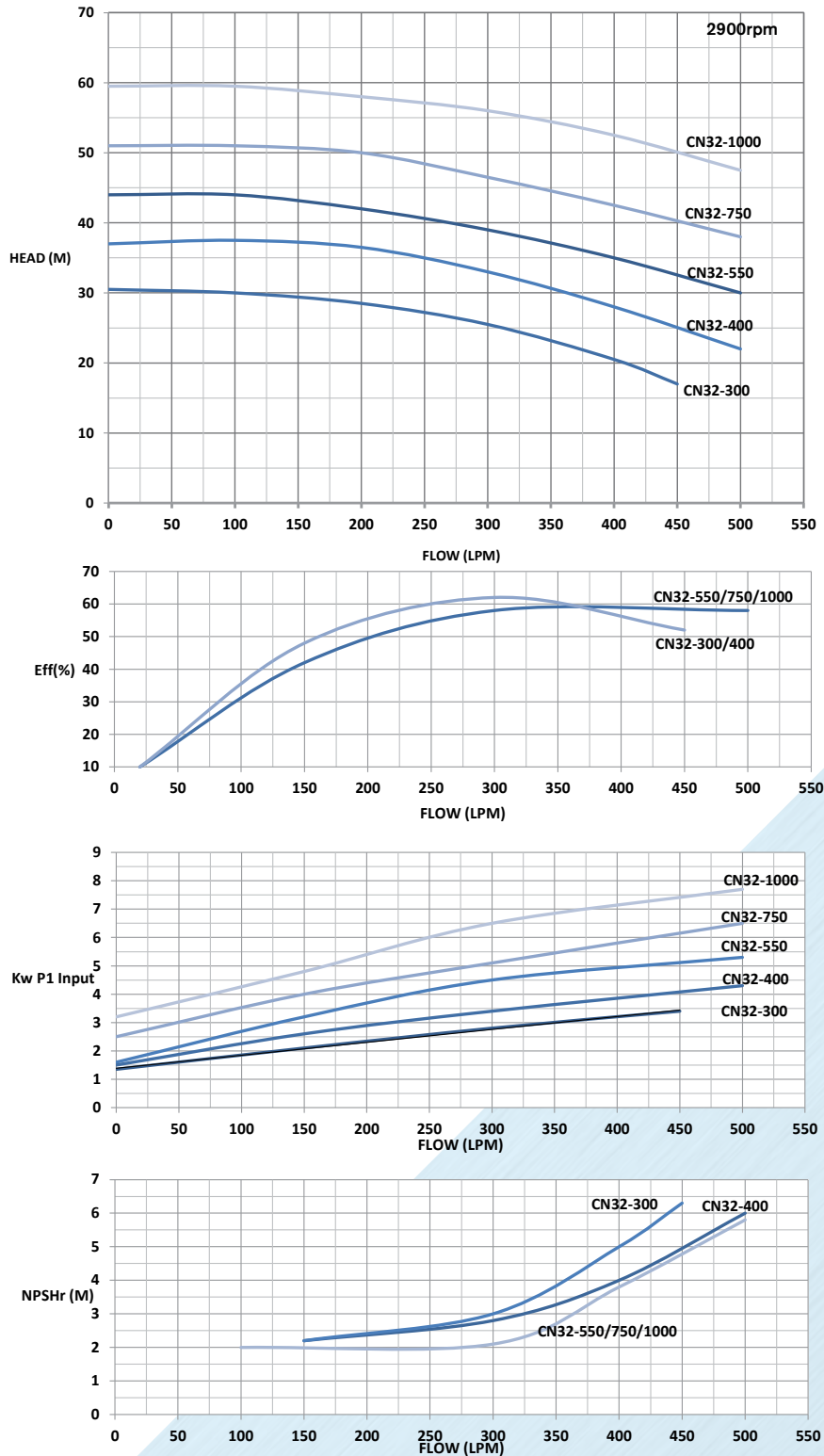
CN32 PERFORMANCE TABLE																
Model	HP	KW	M3/H	0	3	6	9	12	15	18	21	24	27	30	33	36
				LPM	0	50	100	150	200	250	300	350	400	450	500	550
CN32-300	3.0	2.2	H (M)	30.5	30.5	30	29.5	28.5	27.5	25.5	23	20.5	17			
CN32-400	4.0	3.0		37	37.5	37.5	37	36.5	34.5	33	31	28	25	22		
CN32-550	5.5	4.0		44	44.5	44	43	42	41	39	37.5	35	32.5	30		
CN32-750	7.5	5.5		51	51.5	51	50.5	50	48	46.5	45	42.5	40	38		
CN32-1000	10.0	7.5		59.5	59.5	59.5	59	58	57.5	56	54.5	52.5	50	47.5		

CN SERIES DIMENSIONS															
Model	a	b	s	L	B	H	n1	n2	m1	m2	h1	h2	DNA	DNM	KG
CN32-300	80	50	14	437	240	292	240	190	100	70	132	160	50	32	38.5
CN32-400	80	50	14	400	240	292	240	190	100	70	132	160	50	32	43
CN32-550	80	50	14	468	273	340	240	190	100	70	160	180	50	32	54
CN32-750	80	50	14	495	273	340	240	190	100	70	160	180	50	32	62
CN32-1000	80	50	14	537	273	340	240	190	100	70	160	180	50	32	75



CN32 PERFORMANCE DATA

CN32

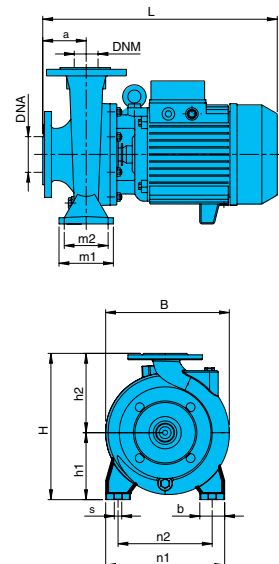


CN40 SERIES

CN40 SERIES							
Model	Hp	KW	Phase	Voltage	Full load amps		
					230V	400V	690V
CN40-400	4.0	3.0	3	230/400	10.0	5.8	-
CN40-550	5.5	4.0	3	230/400	16.0	7.6	-
CN40-750	7.5	5.5	3	400/690	-	10.7	6.2
CN40-1000	10.0	7.5	3	400/690	-	13.9	8.0
CN40-1500	15.0	11.0	3	400/690	-	20.0	11.5
CN40-2000	20.0	15.0	3	400/690	-	26.3	15.3

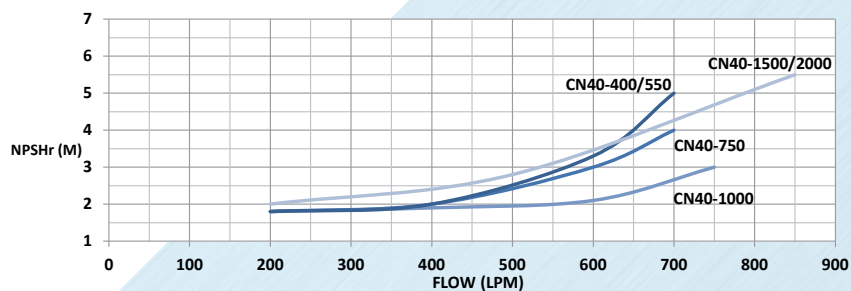
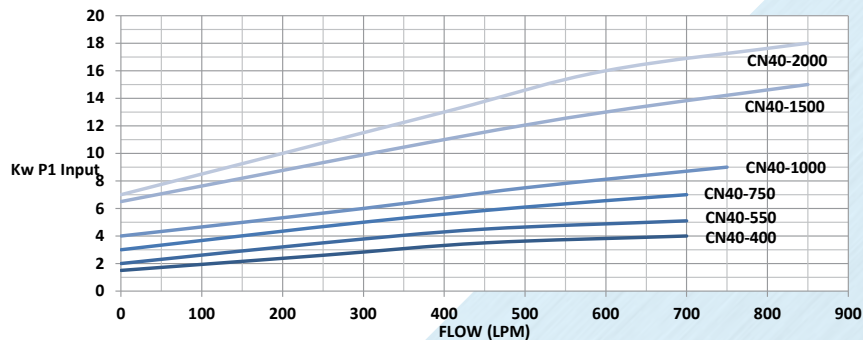
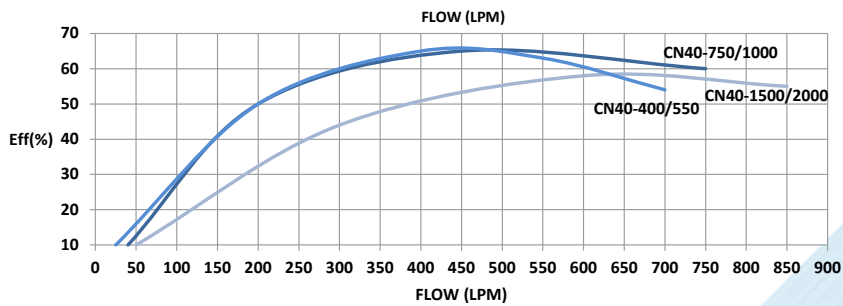
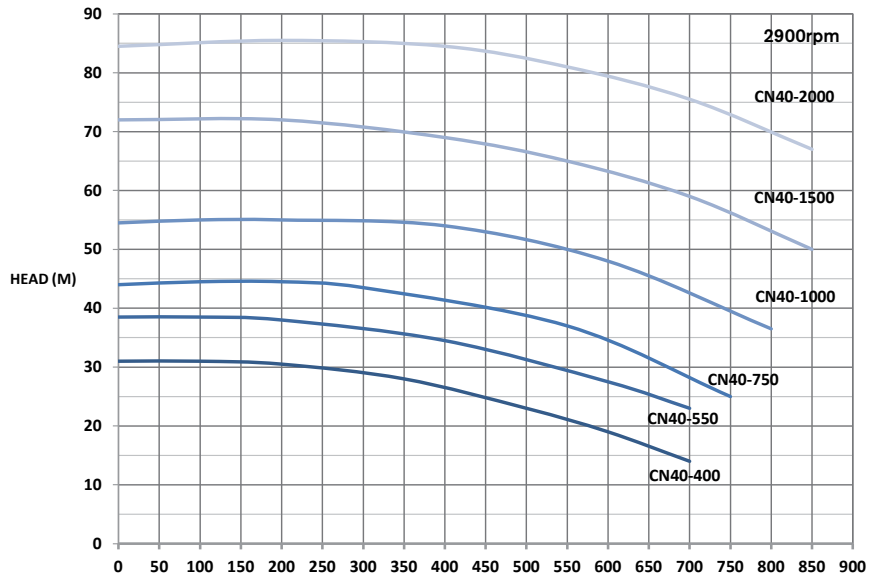
CN40 PERFORMANCE TABLE																				
Model	HP	KW	M3/H	Flow Rate (LPM)																
				0	3	6	9	12	15	18	21	24	27	30	33	36	39	42	45	48
CN40-400	4.0	3.0	H (M)	31	31	31	31	30	29	28.5	27.5	27	25	23.5	22	19.5	17	14.5		
CN40-550	5.5	4.0		38.5	39	38.5	38.5	38	37.5	36.5	35.5	34.5	33	32	29.5	27.5	25	23		
CN40-750	7.5	5.5		44	44.5	44.5	45	44.5	44	43.5	43	42	40.5	39	37	34.5	32	29	25	
CN40-1000	10.0	7.5		54.5	55	55	55	55	55	55	54.5	54	53	51.5	49.5	48	45.5	43	40	36.5
CN40-1500	15.0	11.0		72	72	72.5	72	72	71	70.5	70	69	68	66.5	65	63.5	61.5	59	56	54.5
CN40-2000	20.0	15.0		84.5	85	85.5	85.5	85.5	85.5	85	85	84.5	84	82.5	81	79.5	78	75.5	73.5	70.5

CN SERIES DIMENSIONS															
Model	a	b	s	L	B	H	n1	n2	m1	m2	h1	h2	DNA	DNM	KG
CN40-400	80	50	14	463	242	292	240	190	100	70	132	160	65	40	45.5
CN40-550	80	50	14	463	242	292	240	190	100	70	132	160	65	40	52
CN40-750	100	50	14	515	278	340	265	212	100	70	160	180	65	40	65
CN40-1000	100	50	14	557	278	340	265	212	100	70	160	180	65	40	78
CN40-1500	100	65	14	600	328	405	320	250	125	95	180	225	65	40	100
CN65-2000	100	65	14	686	290	360	280	212	125	95	160	200	80	65	123



CN40 PERFORMANCE DATA

CN40

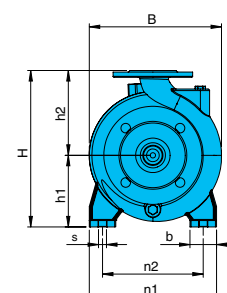
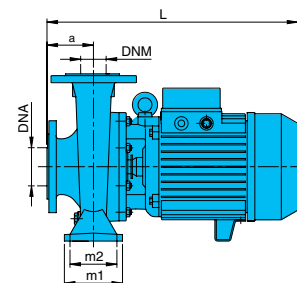


CN50 SERIES

CN50 SERIES							
Model	Hp	KW	Phase	Voltage	Full load amps		
					230V	400V	690V
CN50-300	3.0	2.2	3	230/400	8.1	4.7	-
CN50-400	4.0	3.0	3	230/400	10.0	5.8	-
CN50-550	5.5	4.0	3	230/400	16.0	7.6	-
CN50-750	7.5	5.5	3	400/690	-	10.7	6.2
CN50-1000	10.0	7.5	3	400/690	-	13.9	8.0
CN50-1500	15.0	11.0	3	400/690	-	20.0	11.5

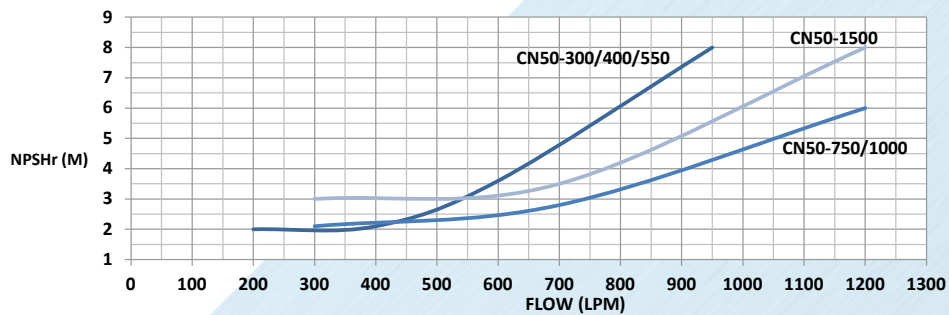
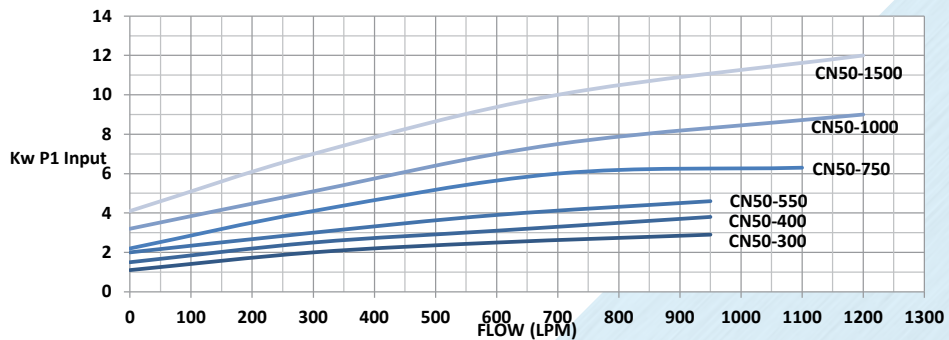
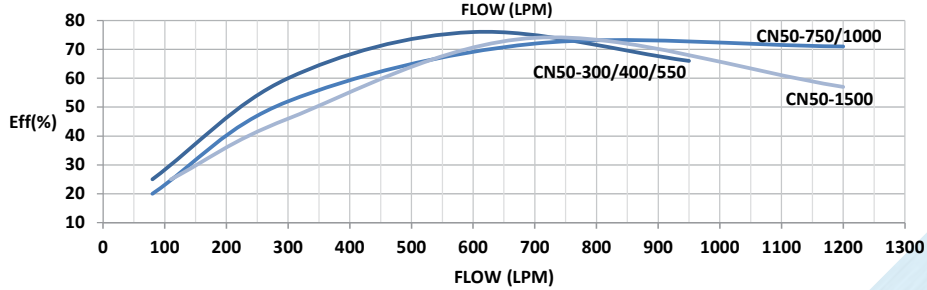
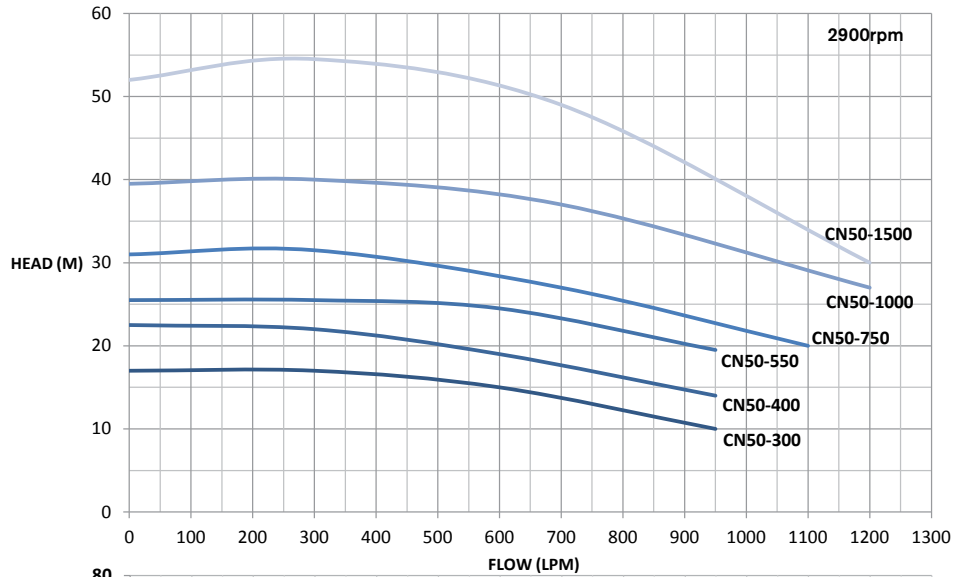
CN50 PERFORMANCE TABLE																				
Model	HP	KW	M ³ /H	Flow Rate (LPM)																
				0	50	100	200	300	350	400	450	500	550	600	700	800	900	1000	1100	1200
CN50-300	3.0	2.2	H (M)	17.5	18	18	18	18	17.5	17.5	17	16.5	16	15.5	14	12.5	10			
CN50-400	4.0	3.0		22.5	22.5	22.5	22.5	22	22	21.5	21	20	20	19.5	18	17	15			
CN50-550	5.5	4.0		25.5	26	26	26	25.5	25.5	25	25	24.5	24.5	24	23	22	19			
CN50-750	7.5	5.5		31.5	32	32	32	32	31	31	30.5	30	29.5	29.5	28	26.5	23	22	19.5	
CN50-1000	10.0	7.5		39.5	40	40	40	40	40	39.5	39.5	39	38	38	37	37	36	33	31	28
CN50-1500	15.0	11.0		52.5	53.5	54	54.5	54.5	54	53.5	53.5	52	51	49	46.5	42	39.5	35.5	30	

CN SERIES DIMENSIONS															
Model	a	b	s	L	B	H	n1	n2	m1	m2	h1	h2	DNA	DNM	HG
CN50-300	100	50	14	457	248	292	240	190	100	70	132	160	65	50	40
CN50-400	100	50	14	483	292	292	240	190	100	70	132	160	65	50	45
CN50-550	100	50	14	483	248	292	240	190	100	70	132	160	65	50	52
CN50-750	100	50	14	515	268	340	265	212	100	70	160	180	65	50	62.5
CN50-1000	100	50	14	557	268	340	265	212	100	70	160	180	65	50	73.5
CN50-1250	100	50	14	561	290	360	265	212	100	70	160	200	65	50	86
CN50-1500	100	50	14	600	290	360	265	212	100	70	160	200	65	50	93
CN50-2000	100	50	14	682	290	360	265	212	100	70	160	200	65	50	123



CN50 PERFORMANCE DATA

CN50

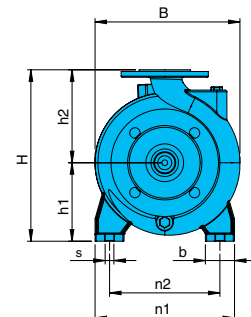
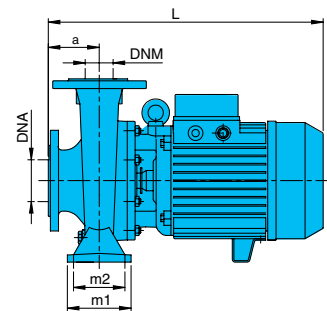


CN65 SERIES

CN65 SERIES							
Model	Hp	KW	Phase	Voltage	Full load amps		
					230V	400V	690V
CN65-750	7.5	5.5	3	400/690	-	10.7	6.2
CN65-1000	10.0	7.5	3	400/690	-	13.9	8.0
CN65-1500	15.0	11.0	3	400/690	-	20.0	11.5

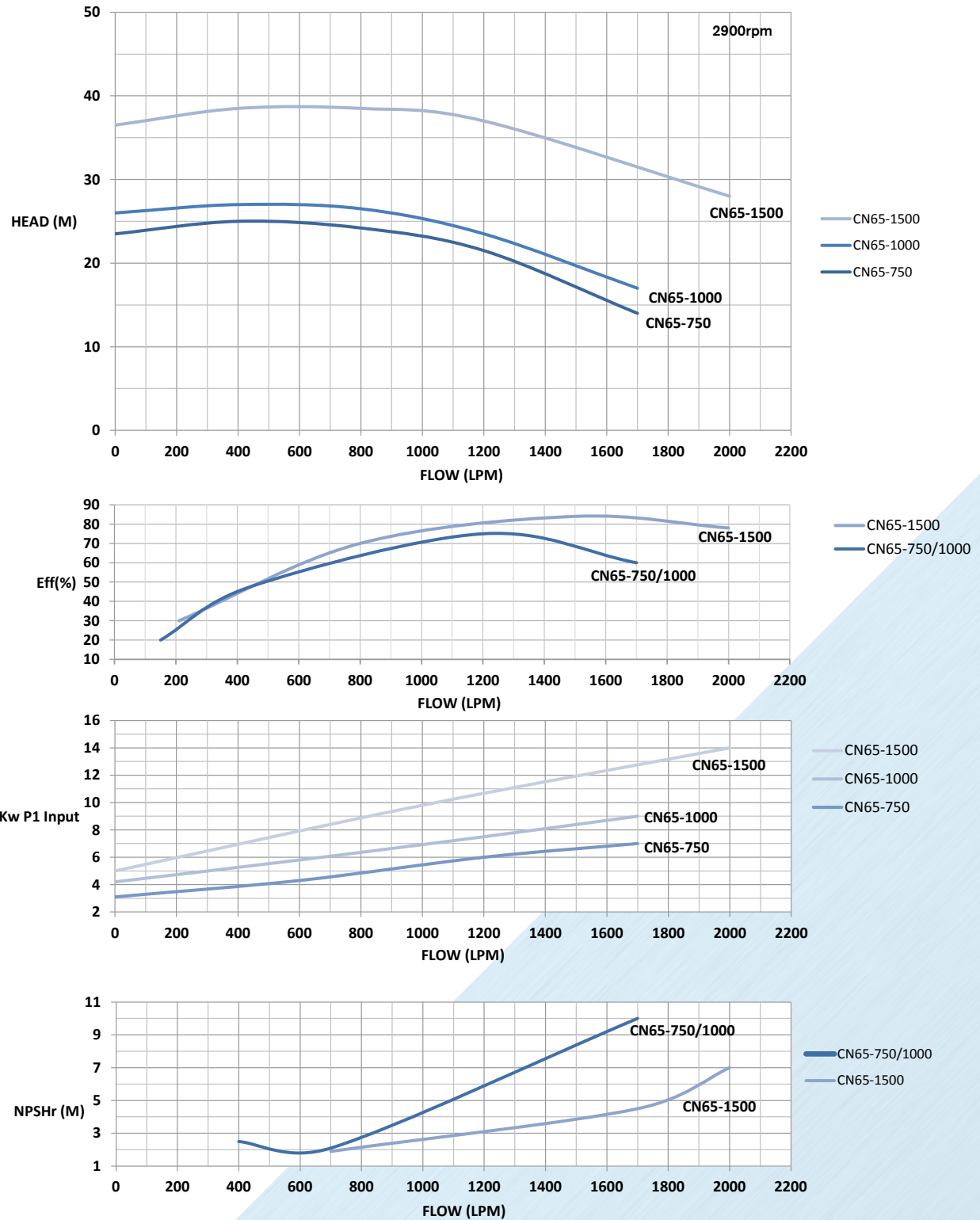
CN65 PERFORMANCE TABLE																				
Model	HP	KW	M3/H	Flow Rate (LPM)																
				0	12	24	30	36	42	48	54	60	66	72	78	84	96	102	120	132
CN65-750	7.5	5.5	H (M)	23.5	24.5	25	25	25	24.5	24	23.5	23	22.5	21.5	20.5	19	16	14		
CN65-1000	10.0	7.5		26	26.5	27	27	26.5	26.5	26.5	26	26	24.5	23.5	23	21.5	18.5	17		
CN65-1500	15.0	11.0		36.5	38	38.5	39	39	39	38.5	38.5	38	38	37	36.5	35.5	33.5	32.5	28	

CN SERIES DIMENSIONS															
Model	a	b	s	L	B	H	n1	n2	m1	m2	h1	h2	DNR	DNM	HG
CN65-750	100	65	14	515	283	340	280	212	125	95	160	180	80	65	64.5
CN65-1000	100	65	14	557	283	340	280	212	125	95	160	180	80	65	74.5
CN65-1250	100	65	14	565	290	360	280	212	125	95	160	200	80	65	84.5
CN65-1500	100	65	14	605	290	360	280	212	125	95	160	200	80	65	91.5
CN65-2000	100	65	14	686	290	360	280	212	125	95	160	200	80	65	123



CN65 PERFORMANCE DATA

CN65





For your nearest dealer please contact Argon Distributors: 0508 634 341

While every endeavor has been made to publish the correct details, no responsibility will be taken for errors, omissions or changes in product specifications. Davies pumps and the 'dp' logo are registered trademarks of Argon Distributors.