

LBC Series

The Davies Pumps LBC series submersible cutter pumps have a rugged cast iron casing and impeller with tungsten carbide tips designed to cut material in the water into smaller pieces to allow free flow through the pump and pipe work without blockages. Designed for high volume drainage and de-watering in a wide range of applications where some soft or stringy solids are present such as screened effluent or sewage sumps*, factory waste and raw water transfer. Range of models available with single or three phase motors and with or without float switches for automatic operation.

*Not suitable for sanitary products or 20% soft solids.

Pump Features

- Cast Iron Construction
- Double mechanical seal with oil chamber
- Impeller with tungsten carbide cutter tips
- Oil free motor
- Maximum liquid temperature 40 degrees
- Flows up to 650lpm
- Pressure up to 17m

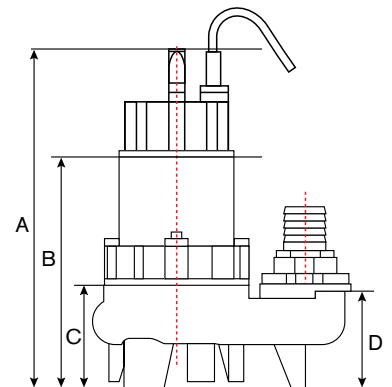
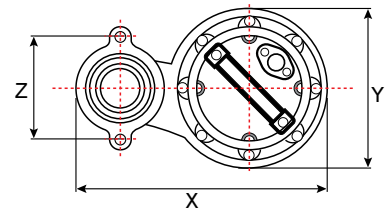
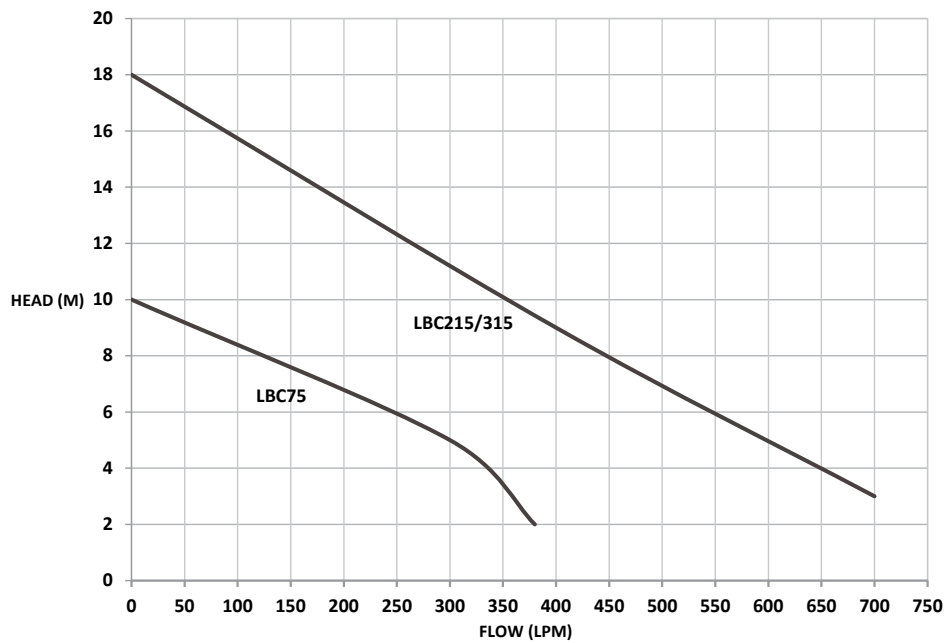
LBC CAST IRON CUTTER TYPE SUBMERSIBLE

Part No.	HP	kW	Volts	Phase	Float Switch	Outlet
240-LBC75T	1.0	0.75	415	3	No	50mm
240-LBC215A	2.0	1.5	230	1	Yes	50mm
240-LBC315T	2.0	1.5	415	3	No	80mm



LBC SERIES

Performance:



DIMENSIONS AND SPECIFICATIONS

Model	A	B	C	D	X	Y	Z
LBC75	430	300	166	123	300	200	119
LBC215	462	335	166	123	300	200	119
LBC315	462	335	166	123	300	200	119

For your nearest dealer please contact Argon Distributors: 0508 634 341