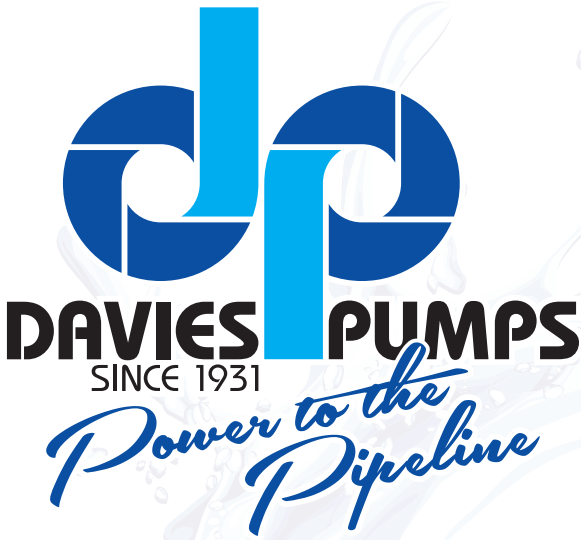


2020



## Fighter Grinder Heavy Duty Submersible Pump

The Davies Pumps Fighter Grinder Pump is a heavy duty submersible pump designed for use in wastewater applications where there is solids such as textiles, plastic or plant material in pumped liquid. The agitator and radial cutter will grind the solids to small particles which are able to be pumped through the semi vortex impeller without blocking pump or pipes.



# Technical Data

FGP GRINDER SUBMERSIBLE						
Part No.	HP	kW	Phase	Volts	Float Switch	Outlet
240-FGP100A	1.0	0.75	1	230	Yes	32mm
240-FGP200	2.0	1.5	1	230	No	32mm
240-FGP200A	2.0	1.5	1	230	Yes	32mm
240-FGP300T	3.0	2.2	3	400	No	50mm
240-FGP500T	5.0	3.7	3	400	No	50mm

## Features

- Cast iron construction with grinder mechanism for pumping raw sewerage.
- Large solids are effectively cut into very fine particles that can be pumped through small pipes without the risk of blocking.
- Double mechanical seal (lower – silicon carbide/silicon carbide, upper-carbon/ceramic) in oil chamber for exceptional durability.
- Maximum submerged depth: 10m.
- Maximum liquid temperature: 40°C.
- Cable length 8mtr.
- Radial cutter and cutterring SUS440C : corrosion resistant material, hardened to 55-60 Rockwell C.
- Specific single phase design for higher starting torque..
- Flanged and threaded discharge for simple installation.



**FGP100**

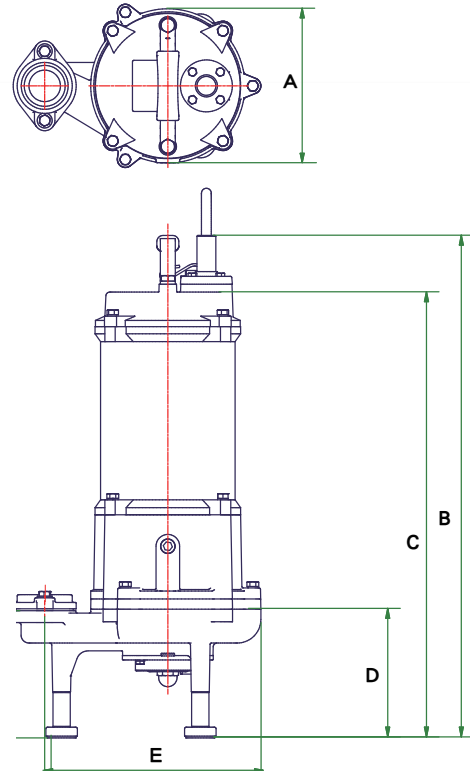


SPECIFICATIONS		
Operating Conditions	Liquid Temperature	0~40°C (32~104°F)
	Submersible depth	Max 10M
Motor	Frequency	50Hz
	Pole	2 Pole
	Type	Dry Type
	Insulation	Class E (120°C)
Pump	Protection	IP 68
	Protector	Thermal protection
	Bearing	Ball Type
	Mechanical seal	Dual Mechanical Seal
	Impeller	Semi-Open

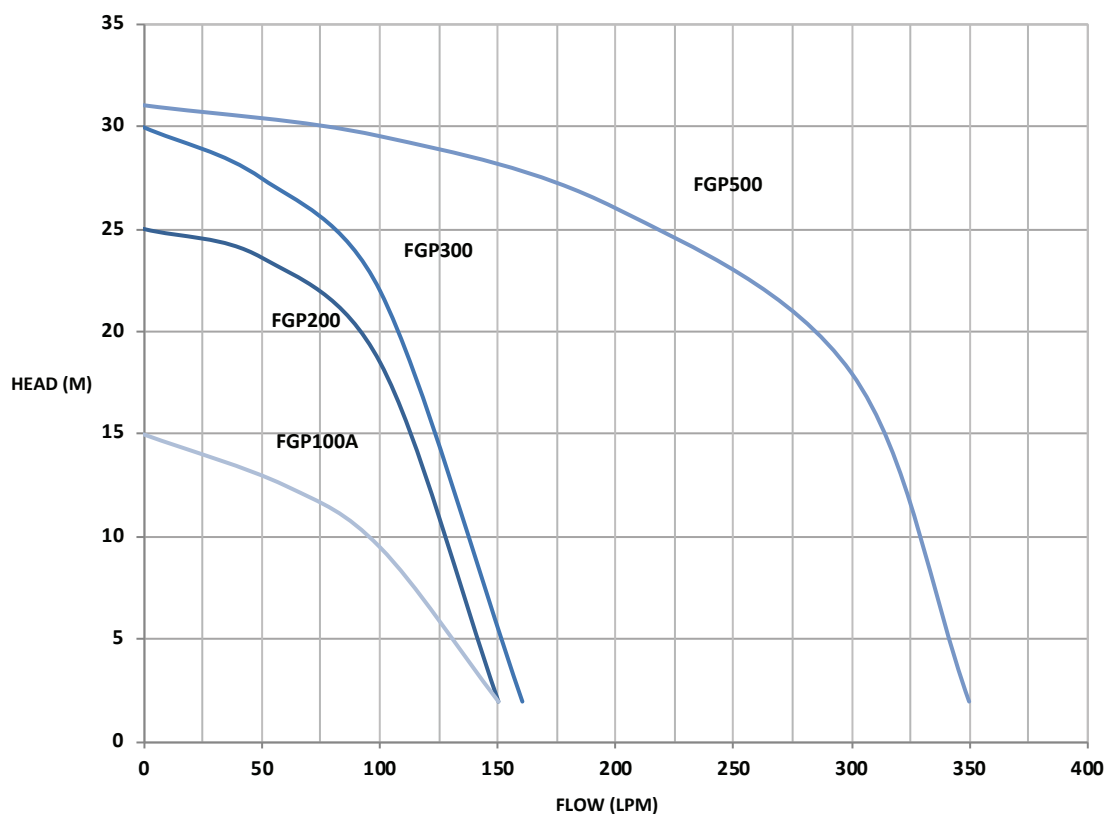


# Dimensions and Performance

DIMENSIONS						
Model No.	A	B	C	D	E	DN
FGP100A	205	460	395	110	240	32mm
FGP200A	185	611	540	161	241	32mm
FGP300T	196	574	502	164	275	50mm
FGP500T	196	594	125	164	275	50mm



## Performance

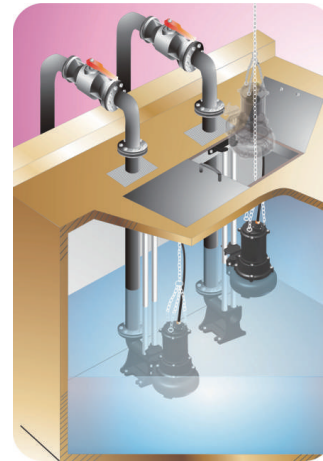
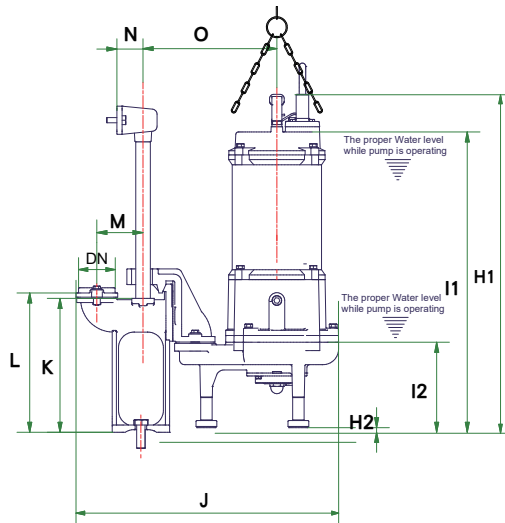


# Guide Rail Kits

The Quick Guide Rail kits to suit the Davies Fighter pumps are designed to be installed in the immersion chamber to allow rapid installation and servicing of the pump without having to remove the pipework or enter the tank. The main bottom mounting flange and top location mount must be bolted in place, square and parallel, prior to the pump being installed. Kit includes fasteners and gaskets to install pump, simply add pipe rails, lifting chain and bracket fasteners.

\* Guide rails not suitable for FGP100.

GUIDE RAIL		
Model No.	Description	Discharge
228-GR2114	Cast Iron	32/50/65



DIMENSIONS											
Model No.	H1	H2	I1	I2	J	K	L	M	N	O	DN
FGP200A	622	14	551	172	467	257	277	89	50	238	32mm
FGP300T	583	11	511	173	504	257	277	89	50	257	50mm
FGP500T	603	11	531	173	504	257	277	89	50	257	50mm

For your nearest dealer please contact Argon Distributors: 0508 634 341